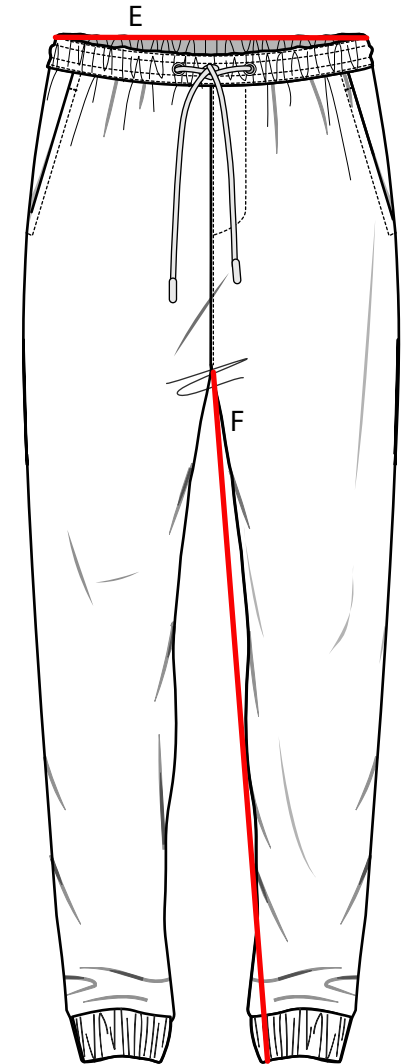
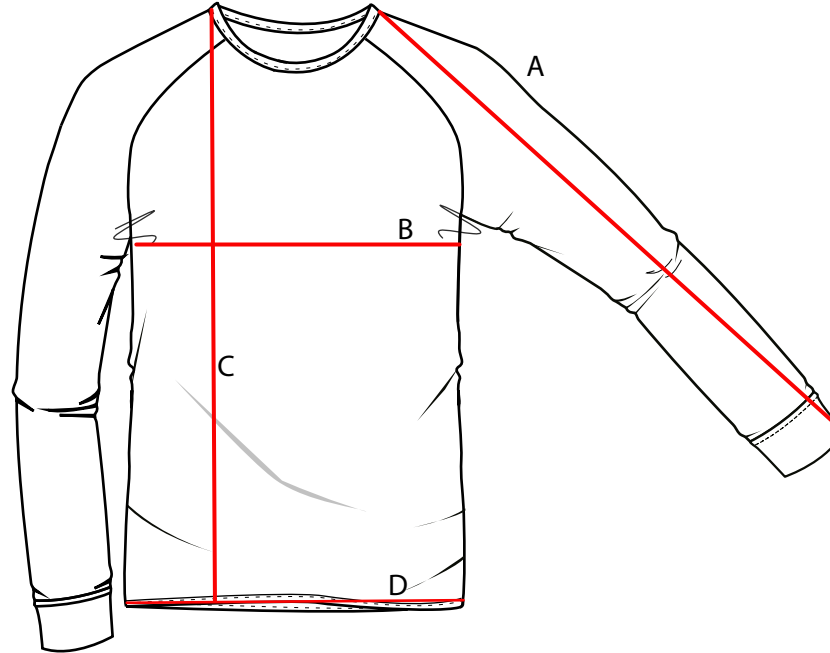
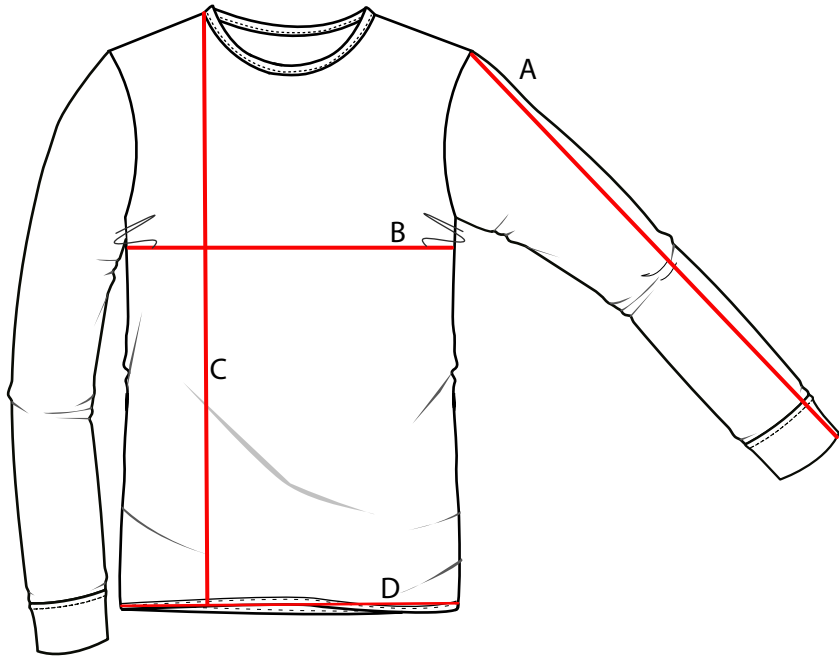


AWDis

How to measure guide



A - Arm Length

Start at the highest point on the shoulder and measure all the way down - including cuff. Ensure sleeve is laying flat and straight.

B - Chest

Measure 2.5cm down from armhole and then straight across the chest.

C - Body Length

Start at the highest point on the shoulder (HPS) and measure straight down including hems.

D - Hem

Start at one side and measure straight across to the other. Garment should be flat.

E - Waist

Measure across from edge of the waist band to the other.

F - Inseam

Measure from the highest point on the crotch down the inner side seam including the cuff.

SIZE GUIDE

Zipped Hooded Top

Measurements	XS / 3/4 Years	S / 5/6 Years	M / 7/8 Years	L / 9/11 Years	XL / 12/13 Years
1/2 Chest	39cm	41cm	43cm	46cm	49cm
Body Length	44cm	48cm	52cm	57cm	62cm
Sleeve Length	37cm	40cm	43cm	47cm	51cm